



CLIVEPEARCE
Now you're moving

2 Bedrooms

Bungalow - Semi Detached

Guide Price

£220,000

Located in

Truro



www.clivepearceproperty.com



Trebartha Road

Truro | | TR1 1LL



A two bedroom semi-detached bungalow in a quiet cul de sac on the edge of the City, within a short walk of local shop and on a regular bus route, also benefitting from garage and parking. No chain.

Trebartha Road

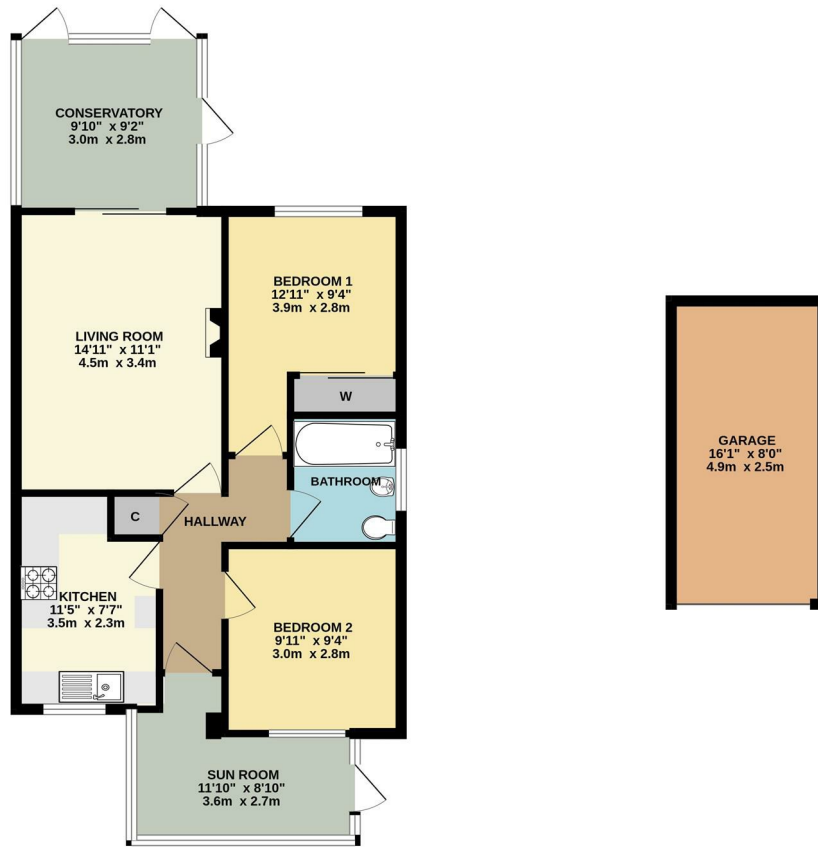
£220,000 Freehold



- Quiet cul de sac location
- No onward chain
- Semi detached bungalow
- Walk to shop
- Nearby bus route
- Garage and driveway
- Two double bedrooms
- Gardens
- Mostly level plot
- Modernisation potential

GROUND FLOOR
709 sq.ft. (65.9 sq.m.) approx.

GARAGE
129 sq.ft. (12.0 sq.m.) approx.



TOTAL FLOOR AREA: 838 sq.ft. (77.9 sq.m.) approx.

Whilst every attempt has been made to ensure the accuracy of the floorplan contained here, measurements of doors, windows, rooms and any other items are approximate and no responsibility is taken for any error, omission or mis-statement. This plan is for illustrative purposes only and should be used as such by any prospective purchaser. The services, systems and appliances shown have not been tested and no guarantee as to their operability or efficiency can be given.
Made with Metropix ©2025

Council Tax Band C

Local Authority

Agents Note: Whilst every care has been taken to prepare these particulars, they are for guidance purposes only. All measurements are approximate and are for general guidance purposes only and whilst every care has been taken to ensure their accuracy, they should not be relied upon and potential buyers/tenants are advised to recheck the measurements.

Energy Efficiency Rating		
	Current	Potential
Very energy efficient - lower running costs		
(92 plus) A		
(81-91) B		
(69-80) C		77
(55-68) D	66	
(39-54) E		
(21-38) F		
(1-20) G		
Not energy efficient - higher running costs		
England & Wales	EU Directive 2002/91/EC	

31 Lemon Street
Truro
Cornwall
TR1 2LS



CLIVEPEARCE
Now you're moving

hello@clivepearceproperty.com

01872 272622

www.clivepearceproperty.com